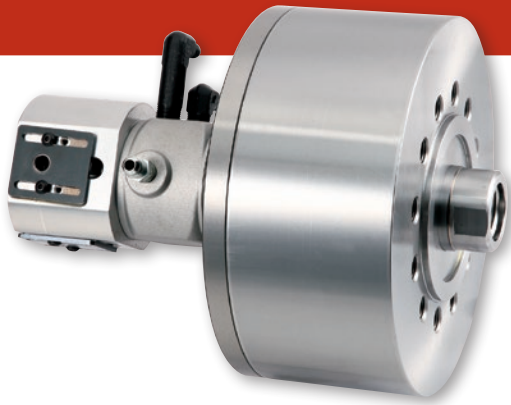
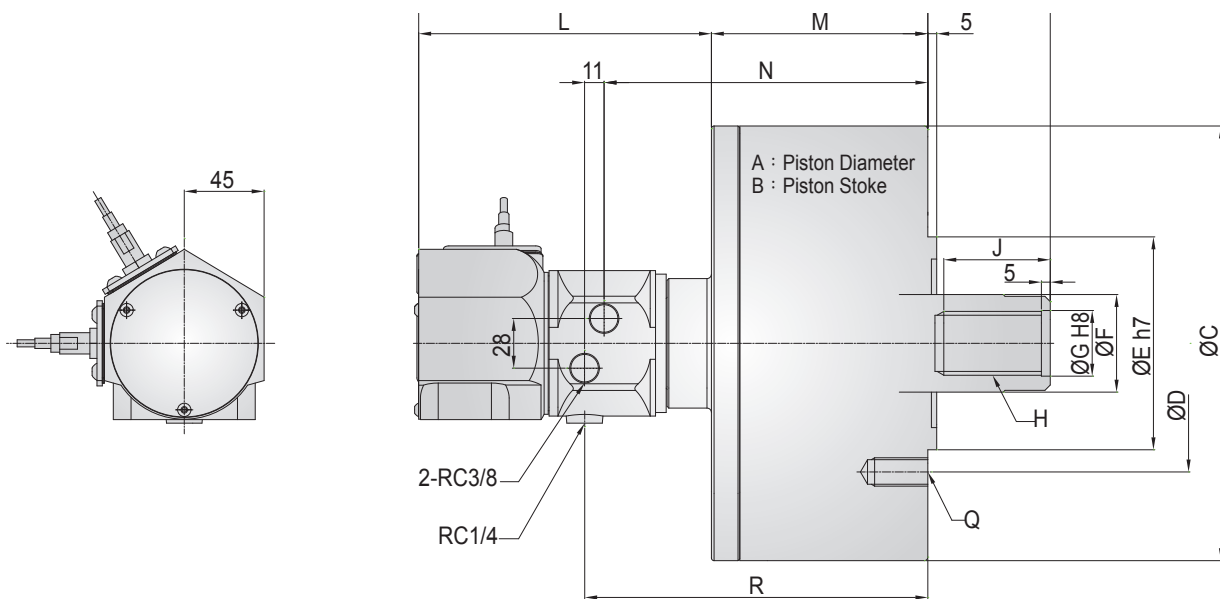


# TC series

## CLOSED CENTER HYDRAULIC CYLINDER (BUILT-IN CHECK VALVE & SWITCH BRACKETS)



- Built-in check valve.
- The bracket for proximity switch. (The proximity switches are extra option)



### SPECIFICATION

Model	Piston Area		Max. Push Force (kgf)	Max. Hydr. Pressure (kgf/cm <sup>2</sup> )	Oil Leakage Rate (l/min)	Max. Speed (r.p.m.)	Weight(kg)	Moment Of Inertia (kg.m <sup>2</sup> )
	Push Side (cm <sup>2</sup> )	Pull Side (cm <sup>2</sup> )						
TC10520	84	79	2960	41	0.8	6,000	8.5	0.013
TC12525	120	113	4285	41	0.8	6,000	11.5	0.023
TC15030	174	160	6120	41	0.8	5,500	14.5	0.048
TC20035	312	290	11015	41	0.8	5,500	37	0.122
TC25060	481.5	453.6	21825	50	2	2,000	78	0.85

• **Push Force** : Hydr. Pressure 41 kgf/cm<sup>2</sup> • **Oil Leakage Rate** : Hydr. Pressure 30.6 kgf/cm<sup>2</sup> and 50°C • **Proximity switch** : DC 12/24V 200mA NPN

### DIMENSIONS

Model	A Piston Diameter	B Piston Stroke	C	D	E (h7)	F	G (H8)	H	J	K	L	M	N	P (max)	P (min)	Q	R
TC10520	105	20	135	100	80	30	21	M20x2.5	35	255	165	91	152	45	25	M10x1.5	162.5
TC12525	125	25	160	130	110	35	25	M24x3.0	44	264	165	99	159.5	51	26	M12x1.75	107.5
TC15030	150	30	190	130	110	45	31	M30x3.5	45	274	165	109	169.5	56	26	M12x1.75	180.5
TC20035	200	35	245	145	120	55	37	M36x4.0	60	287	165	122	182.5	69	34	M16x2	193.5
TC25060	250	60	300	220	160	65	44	M42x3.0	60	362	185	178	220	85	25	M20x2	226

• If the dimension and specification change, please take the confirmation drawing as a standard.